



# Help Me Grow South Carolina

SC INFANT MENTAL HEALTH ASSOCIATION

## CONNECTING SOUTH CAROLINA

HOW THE HELP ME GROW MODEL CONNECTS SYSTEMS AND  
UNLOCKS THE POTENTIAL OF OUR YOUNGEST CHILDREN

# OBJECTIVES

- 01 Overview of Help Me Grow Mission
- 02 Core Components of the Model
- 03 Importance of Developmental Surveillance and Screening
- 04 When and How to Make a Referral





# Help Me Grow

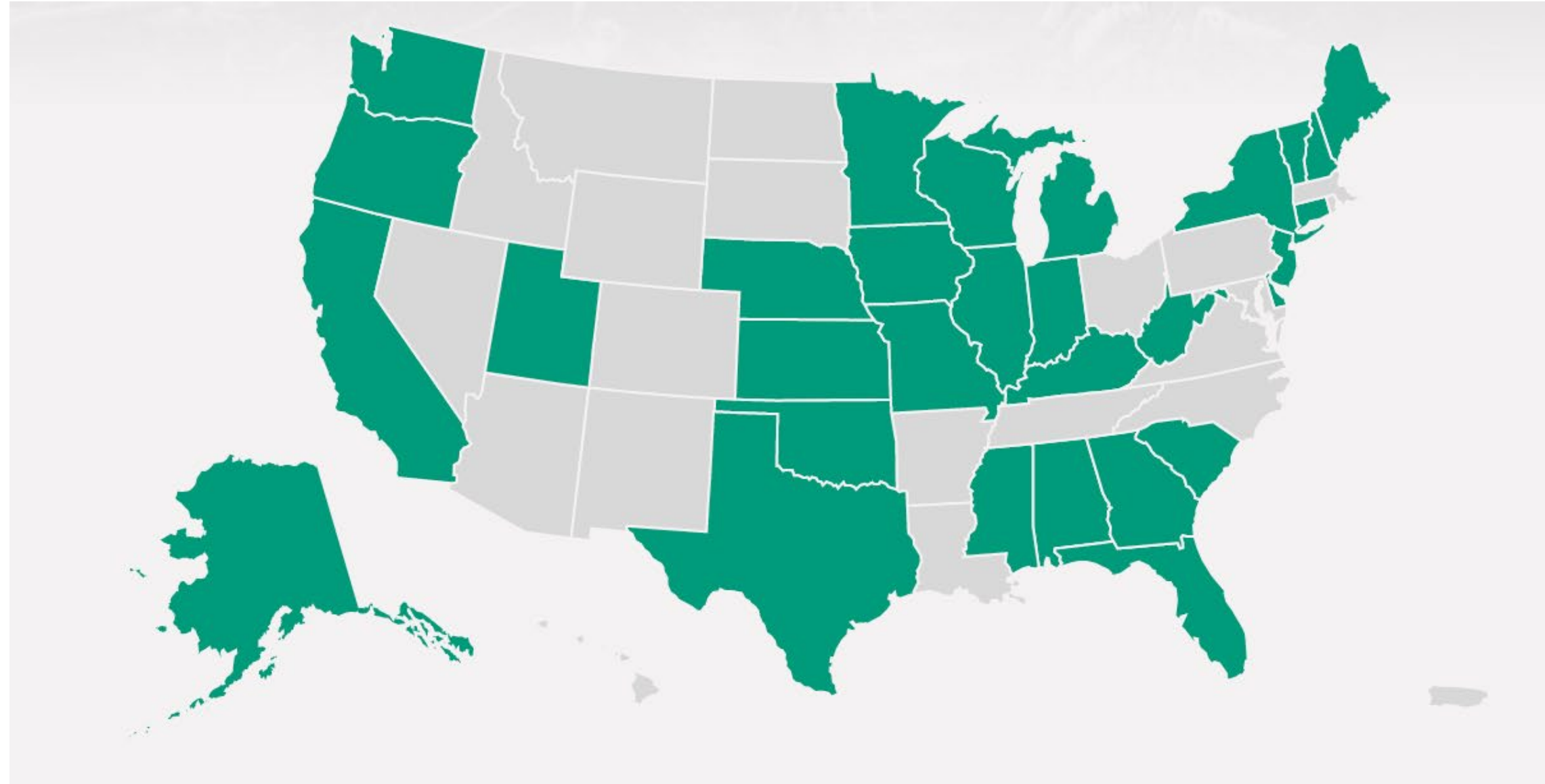
South Carolina



## MISSION

To promote the healthy development of all children prenatal through age 5.

# HELP ME GROW NATIONAL NETWORK



**Help Me Grow**  
South Carolina

# SUPPORTING THE POTENTIAL OF ALL YOUNG CHILDREN

- Grounded in the importance of children's optimal healthy development during early childhood
- HMG Model focuses on developmental promotion, early detection, referral, and linkage
- Especially for children at -risk for developmental or behavioral concerns



# CORE COMPONENTS





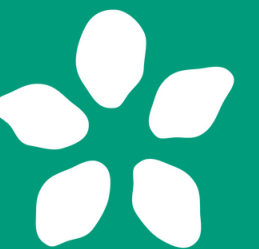
# CENTRALIZED ACCESS POINT

Assists families and professionals in connecting children to the network of community resources working to help them thrive!



# FAMILY AND COMMUNITY OUTREACH

Builds parent and provider understanding of healthy child development, supportive services available to families in the community and how both are critical to improving children's well-being and outcomes.





# PEDIATRIC SUPPORT NETWORK

Supports early detection and intervention efforts and connects child health providers to the network of community resources to best support families.



## DATA COLLECTION AND ANALYSIS

Supports evaluation, helps identify systemic gaps, advances policy change efforts and guides quality improvement.

For every \$1 invested, Help Me Grow SC generates an average of \$3 in quantifiable savings to South Carolina

**Total Annual Average Savings\***

**\$2,044,584**

**Help Me Grow SC reduces state spending to special education by**

**\$1.5 million**

\*Savings accrue in the short- and long-term across a variety of state sectors, including special education, public assistance, child welfare, Medicaid, early intervention, and criminal justice.





Take The ASQ  
<https://helpmegrwsc.org/take-the-asq/>

**AGES AND STAGES QUESTIONNAIRE, THIRD EDITION (ASQ -3)**

- Communication
- Fine Motor
- Gross Motor
- Problem Solving
- Personal - Social

**Ages 1 month-66 months**

**AGES AND STAGES QUESTIONNAIRE: SOCIAL EMOTIONAL, SECOND EDITION (ASQ: SE -2)**

- Self-regulation
- Compliance
- Social-communication
- Adaptive functioning
- Autonomy
- Affect
- Interaction with people

**Ages 1 month-72 months**



# HOW DOES HELP ME GROW SC WORK?

**PHONE:**

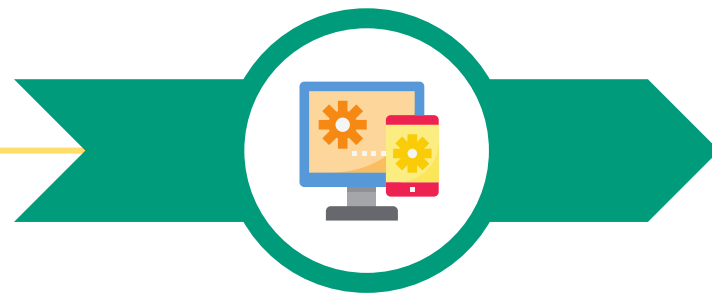
855 - 476 - 9211

**REFERRALS AND SERVICE REQUESTS:**

<https://helpmegrowsc.org/referrals/>

**DEVELOPMENTAL SCREENING:**

<https://helpmegrowsc.org/take-the-asq/>



## CONTACT

Call us, submit an online service request, or complete a screening if you have a concern or simply want to learn more about your child's development.

01



## CONNECT

Our care coordinators are child development specialists who listen to your specific needs & provide an individualized resource pathway.

02



## FEEDBACK

A summary of resources and referrals will be provided to the parent/guardian as well as the referring provider

03



## FOLLOW UP

Our care coordinators will follow up with you to ensure connection to resources and answer any additional questions.

04



# When to refer to Help Me Grow SC:

Child needs ongoing developmental screening

Child or family need infant or early childhood mental health services

Child is enrolled in early care and education center and behavioral concerns are impacting their ability to stay enrolled

Child is NOT already connected to BabyNet

Child is NOT already receiving developmental or behavioral health services

Serving an already connected family?  
Contact us and we will provide a list of resources for you to share!





QUESTIONS?





# Help Me Grow South Carolina

SC INFANT MENTAL HEALTH ASSOCIATION

## CONTACT US

E-mail [scallahan@scimha.org](mailto:scallahan@scimha.org)

Website [www.helpmegrowsc.org](http://www.helpmegrowsc.org)

Phone 855-476-9211

### REFERRALS AND SERVICE REQUESTS:

<https://redcap.link/HelpMeGrowSC>

### DEVELOPMENTAL SCREENING:

<https://helpmegrowsc.org/take-the-asq/>